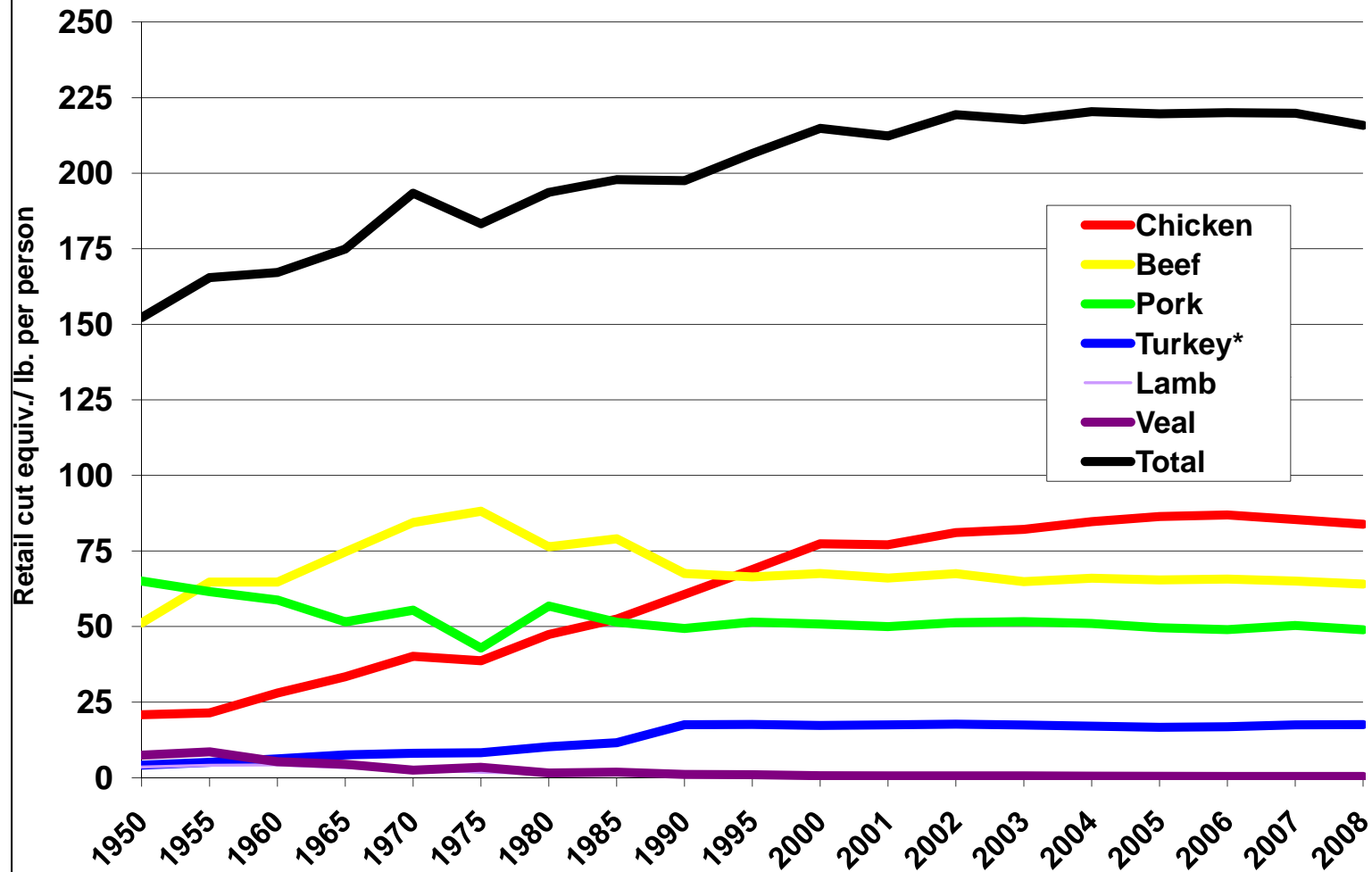


# US Per Capita Meat Consumption 1950 - 2008



\* Data for Turkeys is carcass weight and not retail equivalent

Source: Economic Research Service, U.S.D.A. Food Availability.

<http://www.ers.usda.gov/Data/FoodConsumption/FoodAvailSpreadsheets.htm>. Accessed August 17, 2010.