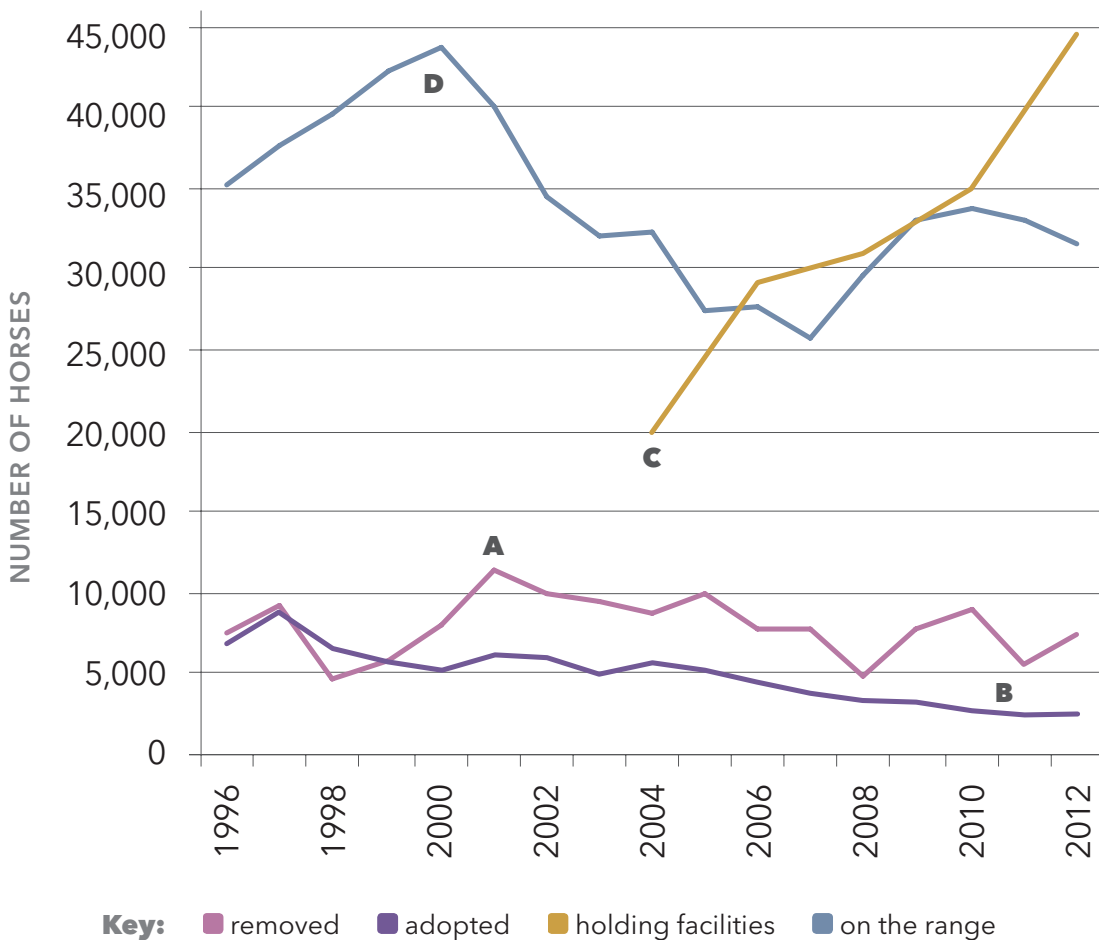


OFF THE RANGE

The Bureau of Land Management used to adopt out most of the horses it removed from the range (A). But with adoptions falling (B), the number of horses in holding facilities has risen (C). Now there are more horses in these facilities than in the wild (D).



SOURCE: BUREAU OF LAND MANAGEMENT; NATIONAL ACADEMY OF SCIENCES