

The Right Path for Pets

Karalee is adopting two dogs from an animal shelter.

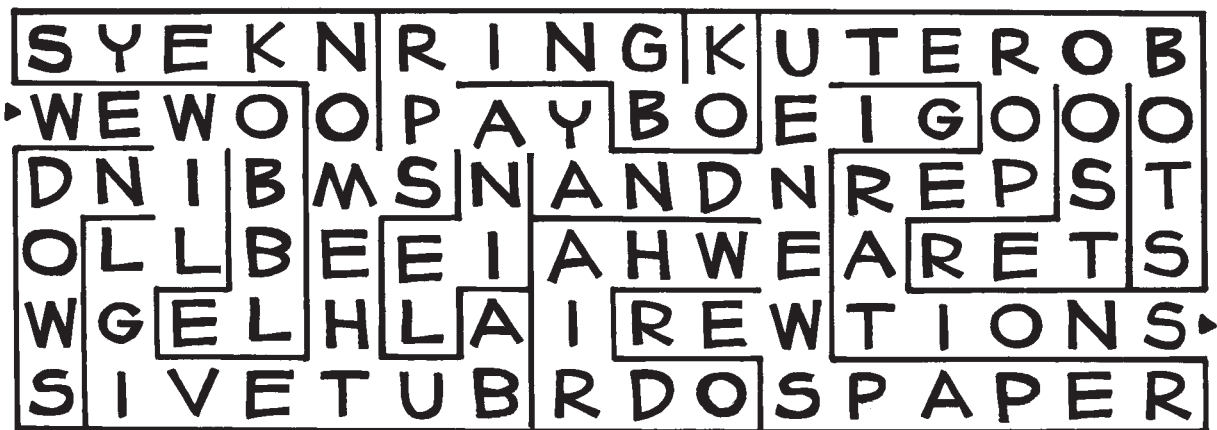
Before bringing their new pets home, Karalee's family went shopping. They bought dog food, dog toys, a brush, leashes, collars, and ID tags.



"That's great," they answer. "There are just two more things your pets will need before they go home. They are not something you can buy at a pet supply store. But we will give your pets these two things right here."

It's finally time to go to the animal shelter. Karalee is very excited. She tells the people at the shelter all the things she has for her new pets.

What are they? Draw a line along the correct path in the maze. Write the letters your line passes through.



Four rows of empty boxes for writing the letters found in the maze. The boxes are arranged in a pattern that roughly corresponds to the maze's layout.

Spaying and neutering are operations that keep pets from having babies. There are already too many pets without homes. The operations also help keep pets healthy.



Draw a picture of Karalee playing with her two new friends.